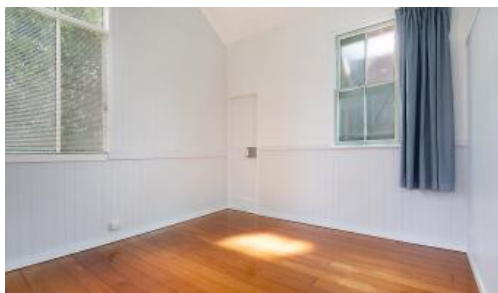




2/8 Thorne Street, Windsor



Quaint, Quirky and Quiet

This perfectly positioned, affordable and unique inner city flat offers so much.

It is easy access to Royal Women Hospital, shops, parks, cafes and is literally a 'stone's throw' to the Lutwyche shopping centre with three supermarkets and virtually everything else you could need at your doorstep.

Please note that due to council regulations this flat only allows 1 tenant.

Features:

- Large One Bedroom
- Polished Timber Floors throughout
- Functional kitchenette
- Modern Bathroom
- High ceilings
- WIFI Included in rent
- Communal Laundry with Washing Machine

 1  1

Price \$360 per week

Property Type Rental

Property ID 8

Agent Details

David Lemke - +61 33574888

Office Details

MGM Homes

497 Lutwyche Rd Lutwyche,
QLD, 4030 Australia
(07) 3357 4888

MGM MICHAEL McMAHON
HOMES

- Electricity split 4 ways

PLEASE REGISTER ONLINE TO VIEW – 10 GROUPS PER
INSPECTION

The above information provided has been furnished to us by the vendor/s. We have not verified whether or not that information is accurate and do not have any belief in one way or the other in its accuracy. We do not accept any responsibility to any person for its accuracy and do no more than pass it on. All interested parties should make and rely upon their own inquiries in order to determine whether or not this information is in fact accurate.