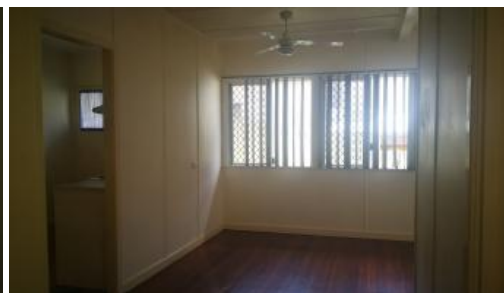




3/189 Thistle Street, Gordon Park



Comfort and Convenient Living!

This freshly renovated unit is located in the well sought after location of Gordon Park. It is close to schools, transports, and 3 of the major shopping centres (Lutwyche, Chermside, and Stafford).

This property features:

- 2 bedrooms, carpeted throughout.
- Main bedroom with air-con, and built-ins.
- Air-conditioning in lounge area.
- Polished timber floors throughout the lounge area.
- Updated kitchen/dining area.
- Fully fenced Courtyard at the front of the unit.
- This unit comes partly furnished, but there is the option for an unfurnished unit.
- Close to schools, shops and transport!

2 1 1

Price \$350 per week

Property Type Rental

Property ID 97

Agent Details

David Lemke - +61 33574888

Office Details

MGM Homes
497 Lutwyche Rd Lutwyche,
QLD, 4030 Australia
(07) 3357 4888

MGM MICHAEL McMAHON
HOMES

Call Ray White Lutwyche TODAY on 3357 4888 to arrange an inspection!

Ray white applications forms can also be downloaded and printed from our website www.raywhitelutwyche.com.au
Your completed application can be handed to our leasing consultant at the property inspection or emailed through to lutwyche.rentals@raywhite.com

The above information provided has been furnished to us by the vendor/s. We have not verified whether or not that information is accurate and do not have any belief in one way or the other in its accuracy. We do not accept any responsibility to any person for its accuracy and do no more than pass it on. All interested parties should make and rely upon their own inquiries in order to determine whether or not this information is in fact accurate.